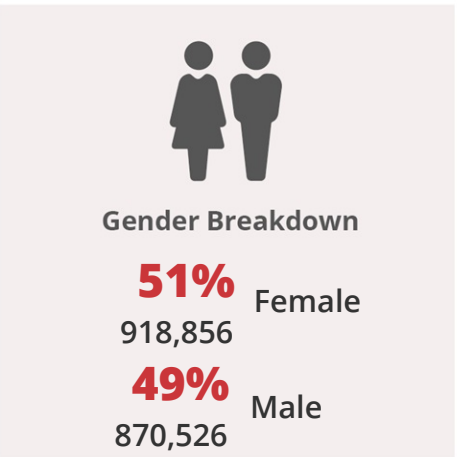
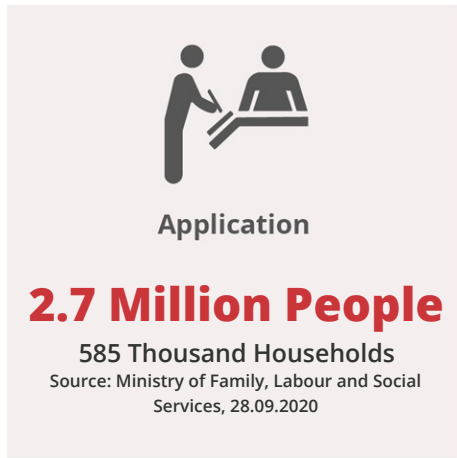




## Emergency Social Safety Net (ESSN) Programme

Programme, has been designed to meet the basic needs of the foreigners residing outside the camps in Turkey in **dignity**; those who are under International Protection and Temporary Protection. The ESSN Programme is funded by ECHO and is implemented in cooperation with Ministry of Family, Labour and Social Services, Turkish Red Crescent (Türk Kızılay) and IFRC. **ESSN** is an **unconditional** cash transfer modality carried out by a bank card.

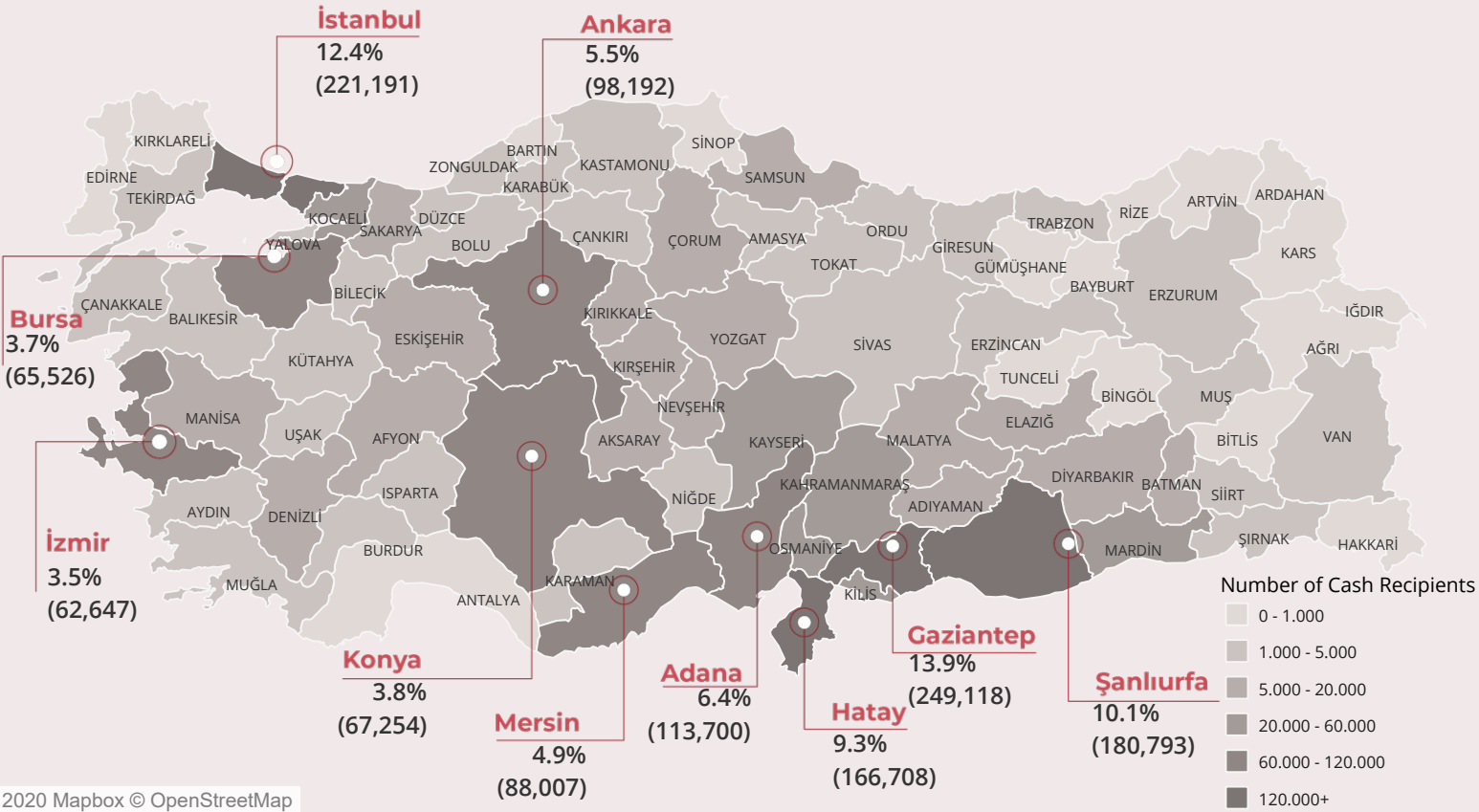
September 2020



168 Call Center has been operated by Turkish Red Crescent (Türk Kızılay) since 2010.

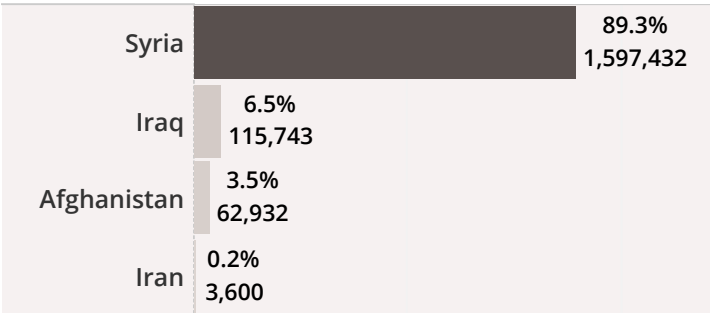


## Top Ten Provinces with Highest Number of People Receiving Regular Assistance

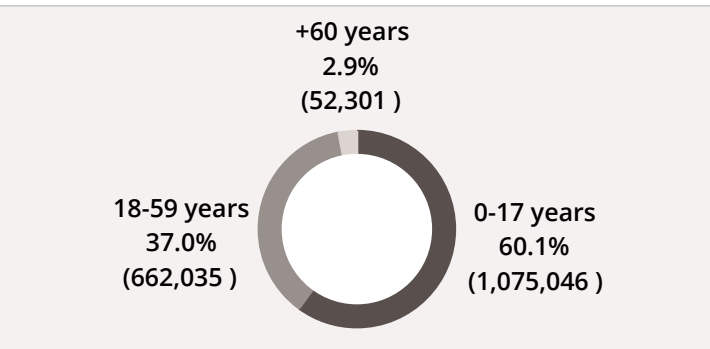


© 2020 Mapbox © OpenStreetMap

## Nationality Breakdown (Top 4 Nationalities)



## Age Group Breakdown



## Criteria Breakdown

Families with four or more children.	55.6%	995,440
Families that have a high number of 'dependents'. This is determined as families that have at least 1.5 dependents for every able bodied adult.	23.2%	415,965
Families with one or more disabled people. They must have a disability of 40% or more.	9.1%	162,473
Single parents with no other adults in the family and at least one child under 18.	9.0%	161,048
Single female.	0.9%	15,256
Elderly people above 60 with no other adults in the family.	0.4%	8,015

\* 31,185 People (1.7%) who do not meet the demographic criteria but whose vulnerability is observed receive cash support through the SASF allowance.



## ContactUs

This document is produced by Kızılaykart Cash Based Assistance Programmes Coordinatorship.

[www.twitter.com/KIZILAYKART](https://www.twitter.com/KIZILAYKART)

[www.facebook.com/Kizilaykart.SUY](https://www.facebook.com/Kizilaykart.SUY)

[Youtube Channel: KIZILAYKART](https://www.youtube.com/channel/KIZILAYKART)

#CardLoadedwithGoodness