



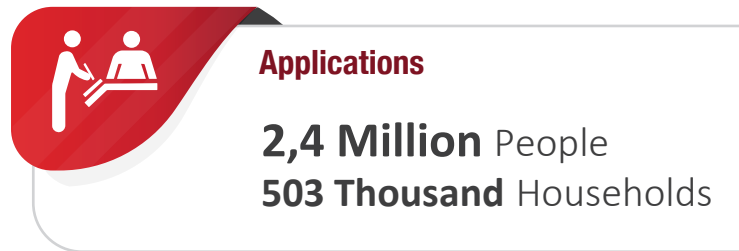
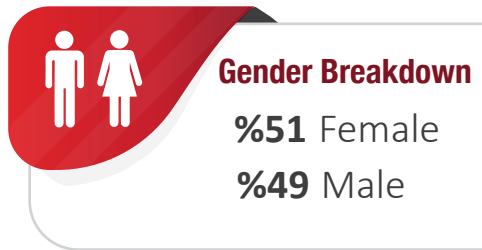
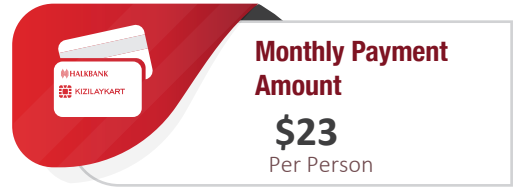
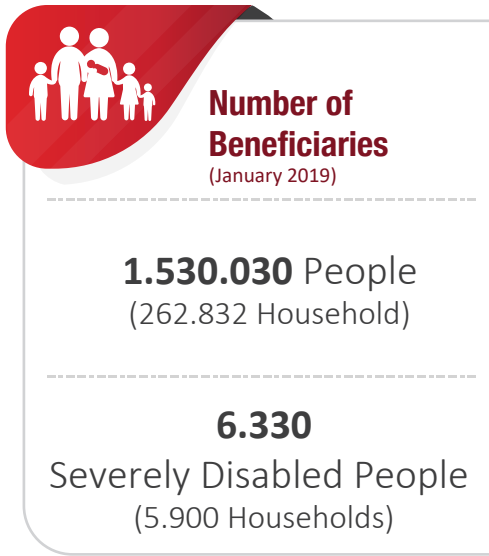
# Kızılaykart Emergency Social Safety Net Programme

January 2019, Monthly Report



Emergency Social Safety Net Programme (ESSN), has been designed to meet the basic needs of the foreigners residing outside the camps in Turkey in a dignified manner; those who are under International Protection and Temporary Protection. The ESSN Programme is funded by ECHO and is implemented in cooperation with Ministry of Family, Labour and Social Services, TRC and WFP.

ESSN Programme is an unconditional and unrestricted cash transfer modality carried out by a bank card.



**Call Centre**

**168**  
CALL  
CENTRE

**5** Languages

**28\*** Operators

Turkish  
English  
Arabic  
Persian  
Pashto

Monday - Friday  
08:00 - 18:00

Saturday  
09:00 - 13:00

**Social Media**

[www.kizilay.org.tr/Kizilaykart-SUY](http://www.kizilay.org.tr/Kizilaykart-SUY)

[www.twitter.com/KIZILAYKART](https://www.twitter.com/KIZILAYKART)

[www.facebook.com/Kizilaykart.SUY](https://www.facebook.com/Kizilaykart.SUY)

Youtube Channel: KIZILAYKART-SUY

\*23 Operators are working for Emergency Social Safety Net (ESSN) Programme and 5 Operators are working for Conditional Cash Transfer for Education (CCTE) Programme.



IMPLEMENTING PARTNERS



SUPPORTED BY





# Kızılaykart Emergency Social Safety Net Programme

January 2019, Monthly Report



## Number of Distributed Cards

**267.340 Cards**  
**%99 Card Distribution Ratio**



## Number of ATMs 3.999 ATMs

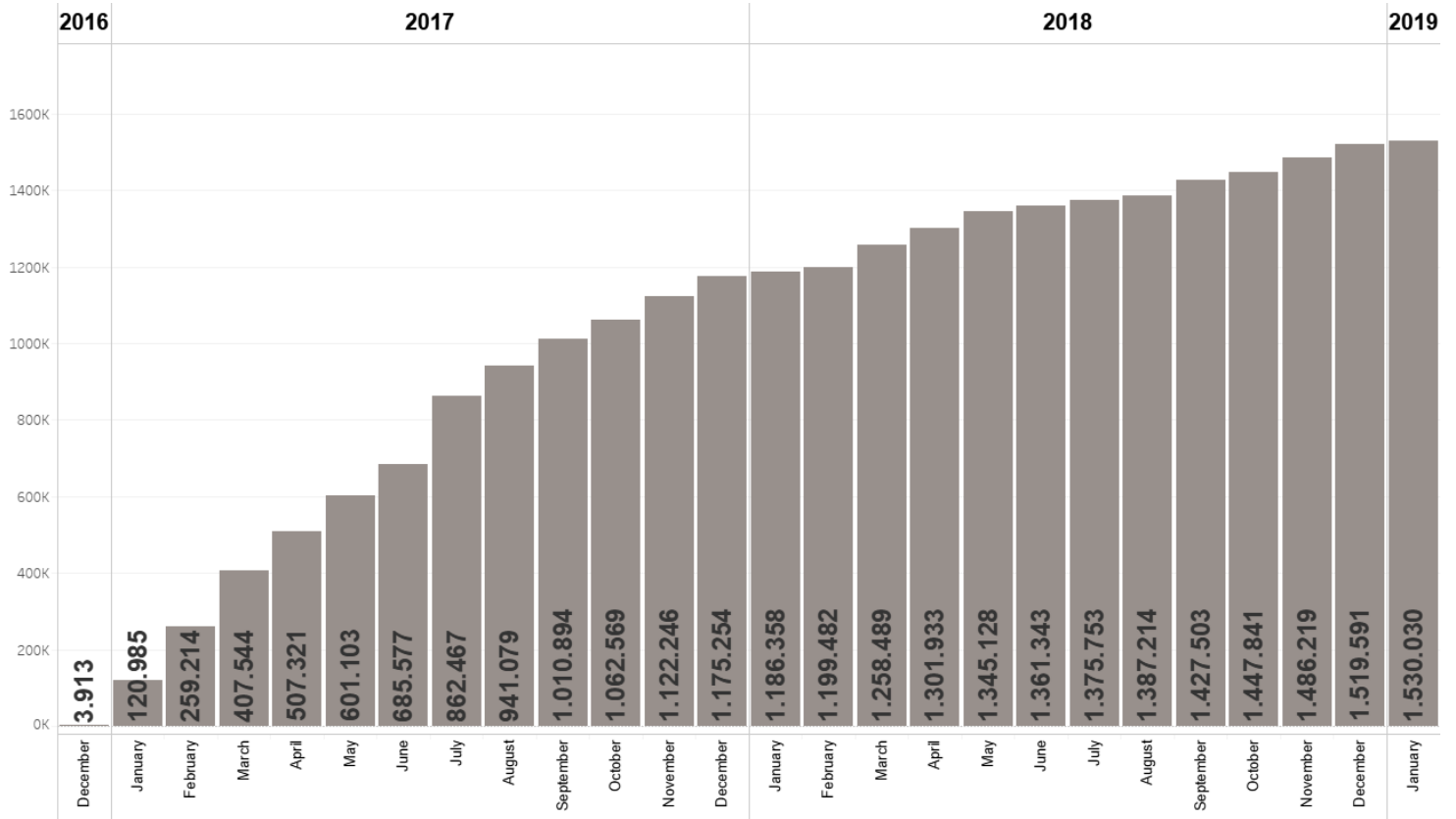
Free cash withdrawal points for the beneficiaries of the Kızılaykart Programmes in Turkey

## Number of Halkbank Branches

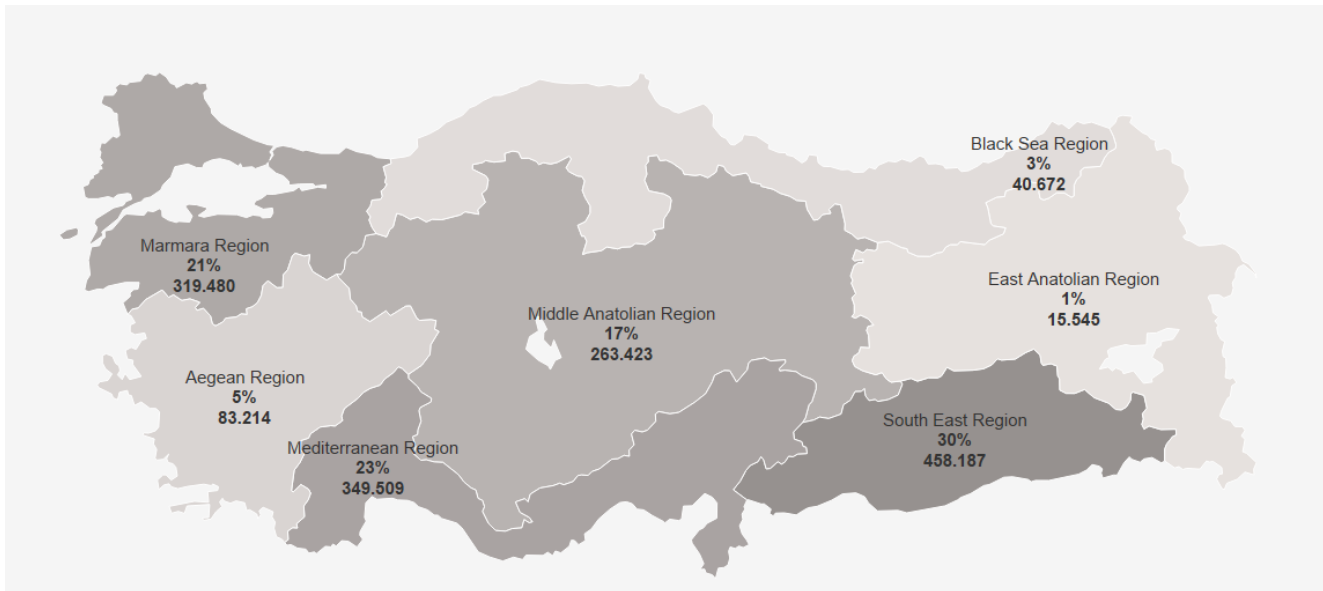
**979 Branches**



## Number of Monthly Beneficiaries



## Regional Breakdown of Beneficiaries



## Province Breakdown of Beneficiaries



## Top 10 Provinces with Highest Beneficiaries

İSTANBUL	14%	213.827
GAZİANTEP	14%	209.391
ŞANLIURFA	10%	152.124
HATAY	9%	135.095
ANKARA	6%	93.131
ADANA	5%	83.748
MERSİN	4%	68.216
BURSA	4%	59.916
KONYA	4%	58.475
İZMİR	3%	51.571

## Criteria Breakdown

Four or more children	58,0%
Dependency ratio $\geq 1,5$	23,0%
Parent with no other adults living in the household	9,7%
At least one disabled person in family	8,1%
Single female	0,7%
Elderly headed household	0,4%

## Gender Breakdown

Female	 51% 784.844
Male	 49% 745.186

## Nationality Breakdown

Syria	88,2%	1.348.855
Iraq	8,2%	125.561
Afghanistan	2,9%	43.693
Iran	0,2%	3.226

## Age Group Breakdown

0-17	 60% 924.375
18-59	 37% 561.031
+60	 3% 44.624