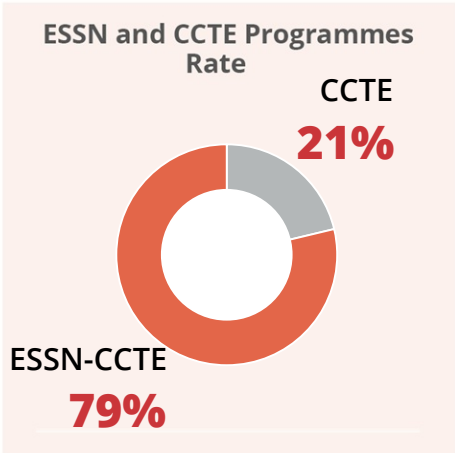
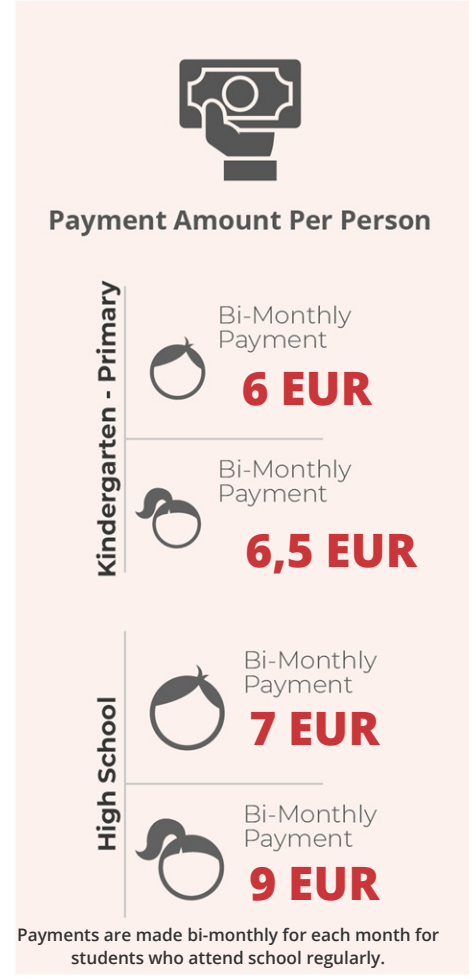




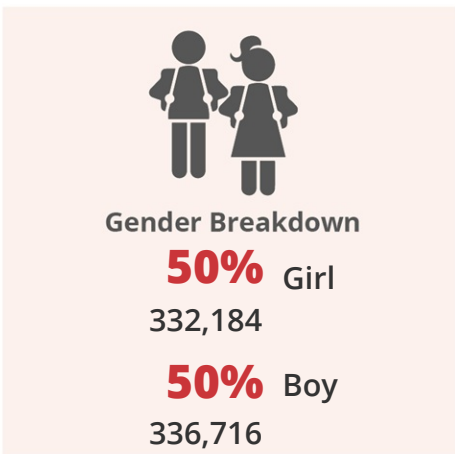
Since 2003, CCTE is a national social assistance program implemented by the Ministry of Family, Labor and Social Services (MoFLSS) since 2003 for nationwide education for Turkish citizens and foreigners. The programme encourages families with children of school age and limited financial means to **send their children to school regularly**. As of May 2017, assistance within the CCTE Programme for foreigners have started. The program is funded by the ECHO, Population, Refugees and Immigration Administration, the US Department of Foreign Affairs and the Government of Norway. The Programme is implemented in cooperation with the MoFLSS, the Ministry of Education, the Turkish Red Crescent and UNICEF. **CCTE is a conditional cash transfer modality carried out by a bank card.**

Conditional Cash Transfer for Education (CCTE) Programme

November 2020



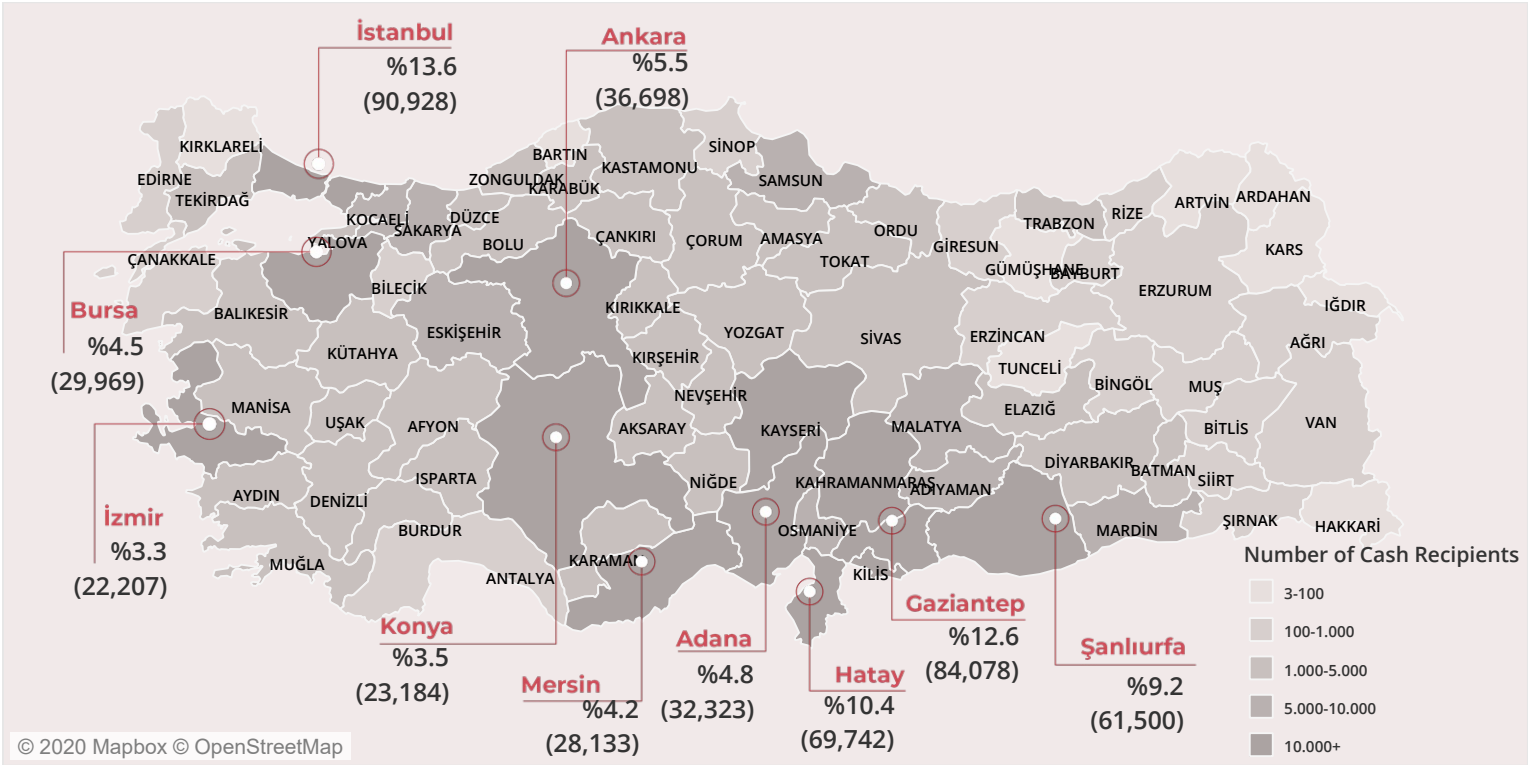
Calculated by taking into account the cash recipient's head of household status in ESSN for starting from May.



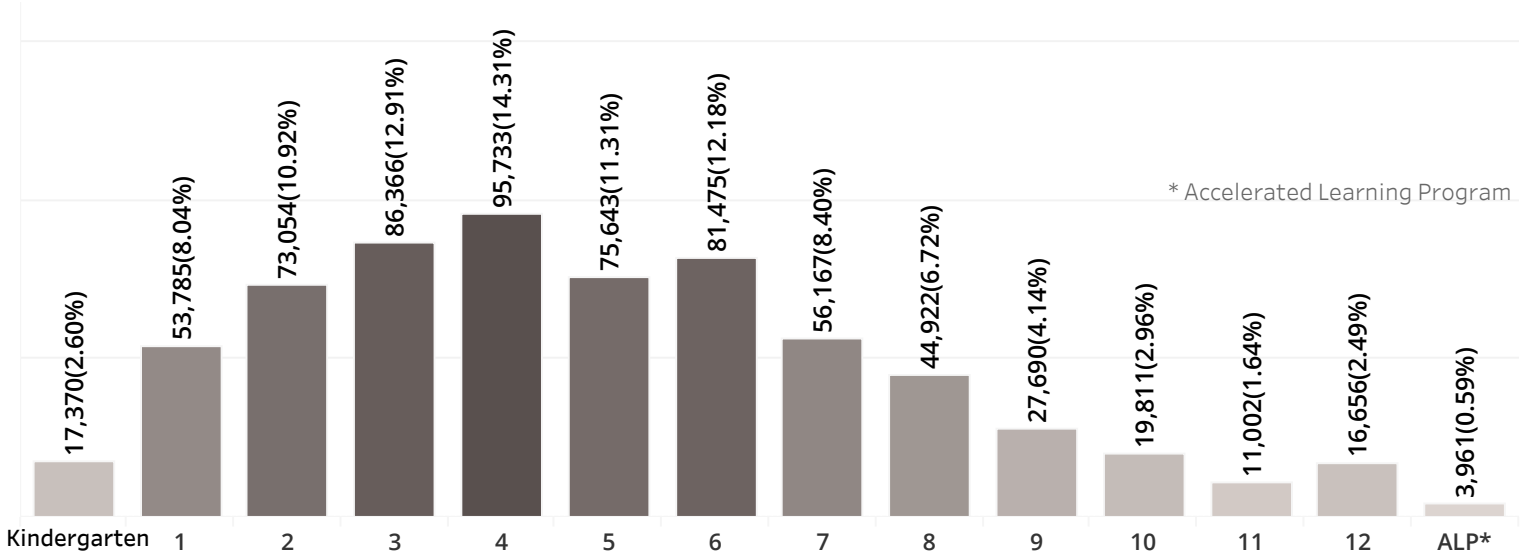
* 168 Call Center has been operated by Turkish Red Crescent (Türk Kızılay) since 2010.



Top 10 Provinces with Highest Number of People Receiving Regular Assistance



Grade Breakdown



Nationality Breakdown (Top 4 Nationalities)

SYRIA	%85.0	568,524
IRAQ	%8.5	57,135
AFGHANISTAN	%4.9	32,461
IRAN	%0.6	4,077

School Level Breakdown

Kindergarten	%2.6	17,370
Primary School	%46.6	308,952
Middle School	%38.9	258,207
High School	%11.3	75,170
ALP	%0.6	3,961

