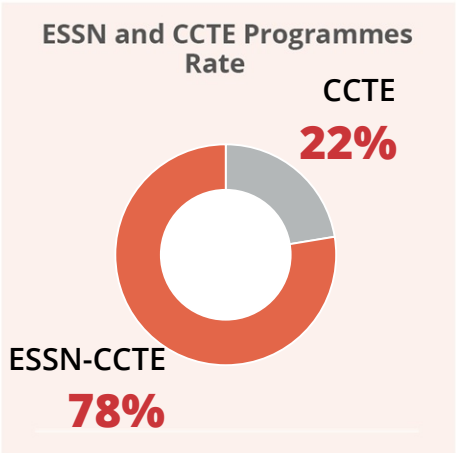
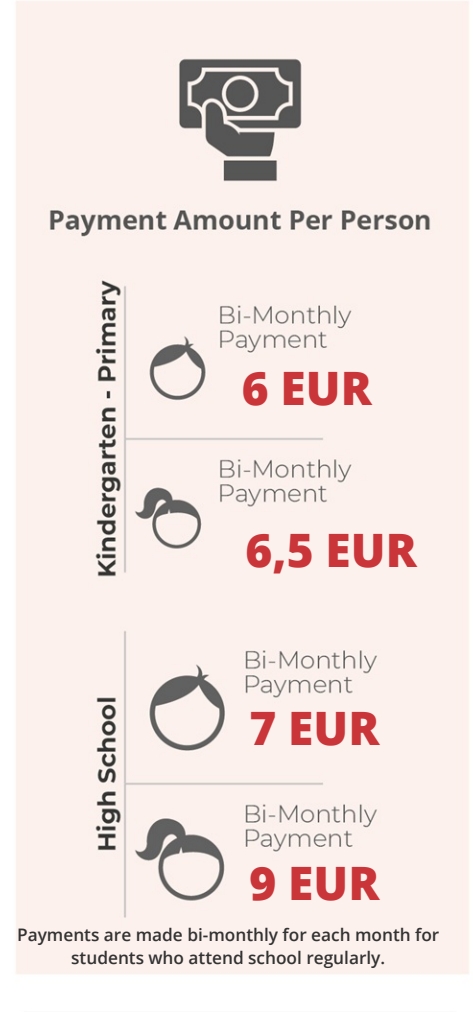
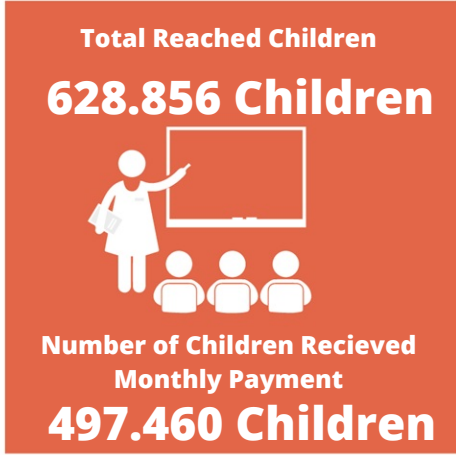




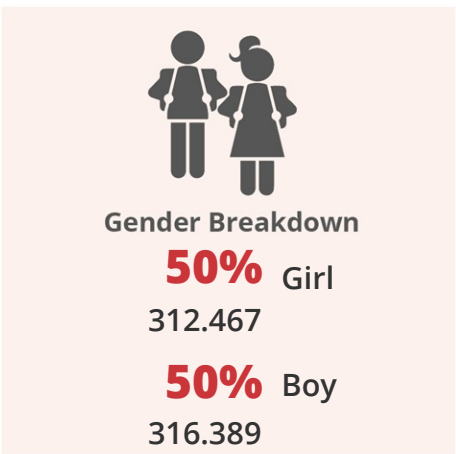
Conditional Cash Transfer for Education (CCTE) Programme

Since 2003, CCTE is a national social assistance program implemented by the Ministry of Family, Labor and Social Services (MoFLSS) since 2003 for nationwide education for Turkish citizens and foreigners. The programme encourages families with children of school age and limited financial means to **send their children to school regularly**. As of May 2017, assistance within the CCTE Programme for foreigners have started. The program is funded by the ECHO, Population, Refugees and Immigration Administration, the US Department of Foreign Affairs and the Government of Norway. The Programme is implemented in cooperation with the MoFLSS, the Ministry of Education, the Turkish Red Crescent and UNICEF. CCTE is a **conditional** cash transfer modality carried out by a bank card.

September 2020



Calculated by taking into account the cash recipient's head of household status in ESSN for starting from May.

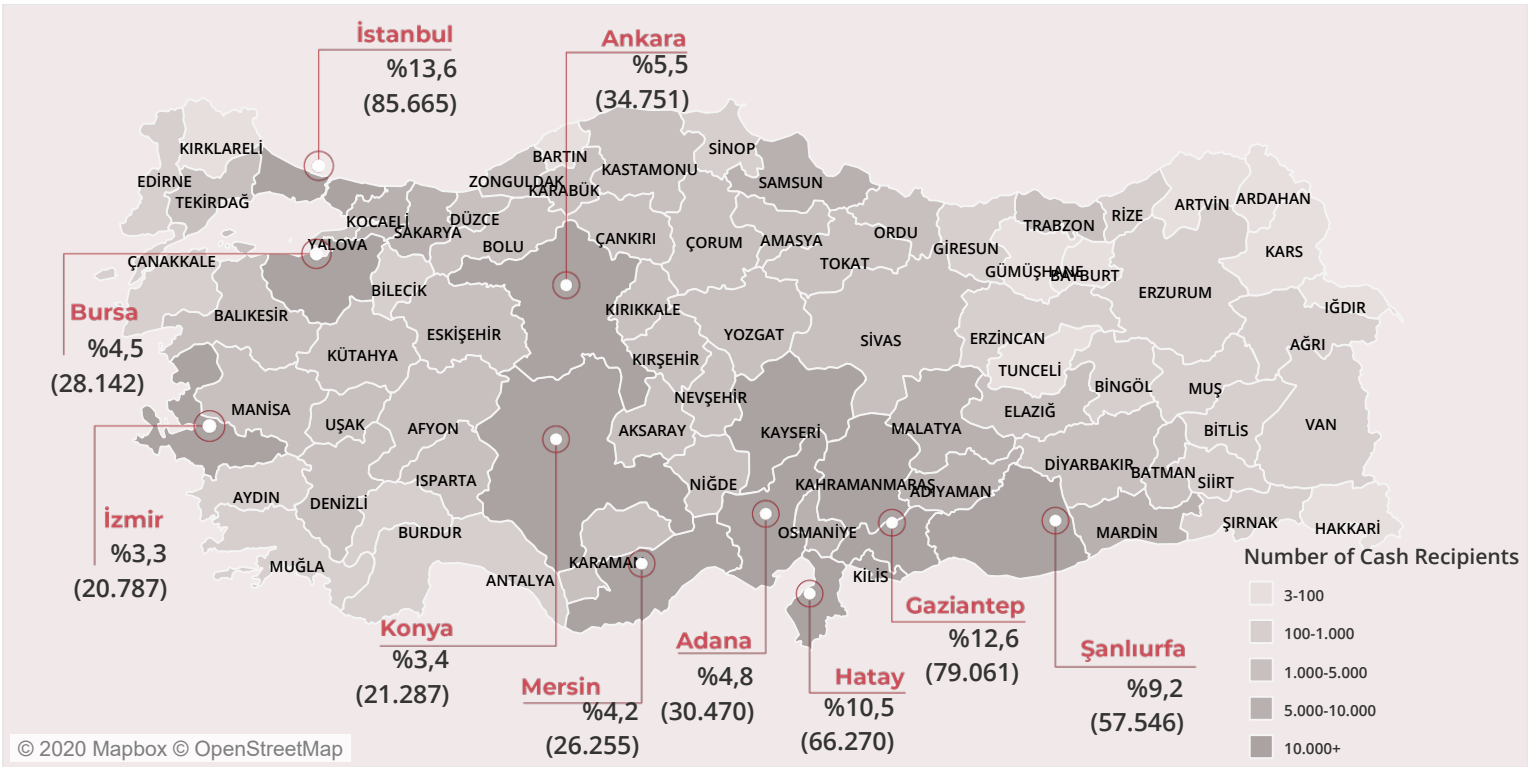


* 168 Call Center has been operated by Turkish Red Crescent (Türk Kızılay) since 2010.

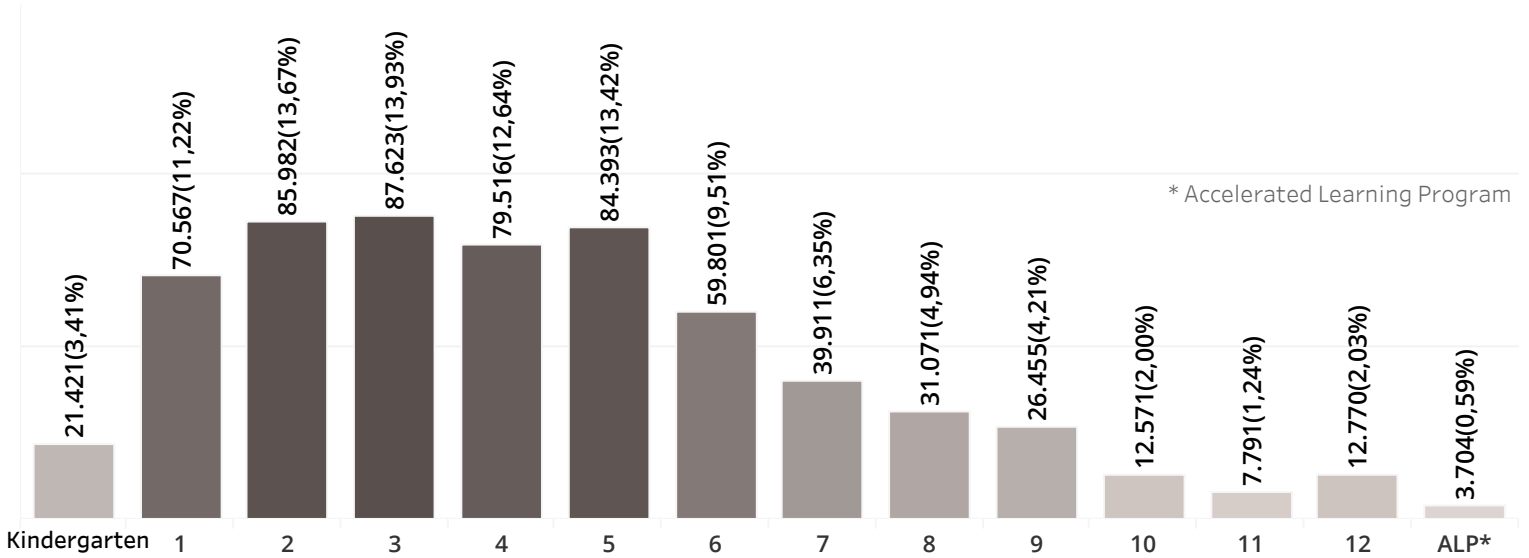




Top 10 Provinces with Highest Number of People Receiving Regular Assistance



Grade Breakdown



Nationality Breakdown (Top 4 Nationalities)

Nationality	Percentage	Number of Recipients
SYRIA	%84,9	534.146
IRAQ	%8,7	54.459
AFGHANISTAN	%4,7	29.864
IRAN	%0,6	3.975

School Level Breakdown

School Level	Percentage	Number of Recipients
Kindergarten	%3,4	21.421
Primary School	%51,9	323.702
Middle School	%34,5	215.176
High School	%9,6	59.592
ALP	%0,6	3.704



ContactUs

This document is produced by Kızılaykart Cash Based Assistance Programmes Coordinatorship.

www.twitter.com/KIZILAYKART

www.facebook.com/Kizilaykart.SUY

[Youtube Channel: KIZILAYKART](https://www.youtube.com/channel/KIZILAYKART)

#CardLoadedwithGoodness