



Since 2003, CCTE is a national social assistance program implemented by the Ministry of Family, Labor and Social Services (MoFLSS) since 2003 for nationwide education for Turkish citizens and foreigners. The programme encourages families with children of school age and limited financial means to **send their children to school regularly**. As of May 2017, assistance within the CCTE Programme for foreigners have started. The program is funded by the ECHO, Population, Refugees and Immigration Administration, the US Department of Foreign Affairs and the Government of Norway. The Programme is implemented in cooperation with the MoFLSS, the Ministry of Education, the Turkish Red Crescent and UNICEF. **CCTE is a conditional cash transfer modality carried out by a bank card.**

May 2020

## Conditional Cash Transfer for Education (CCTE) Programme

**Total Reached Children**  
**623.326 Children**

**Number of Children Received Monthly Payment**  
**465.231 Children**

**Total Payment Amount**  
**106 Million EUR**

**Payment Amount Per Person**

Kindergarten - Primary	Bi-Monthly Payment	<b>4 EUR</b>
	Bi-Monthly Payment	<b>5 EUR</b>
High School	Bi-Monthly Payment	<b>7 EUR</b>
	Bi-Monthly Payment	<b>8 EUR</b>

Payments are made bi-monthly for each month for students who attend school regularly.

**ESSN and CCTE Programmes Rate**

**ESSN-CCTE 78%**  
**CCTE 22%**

**Application**  
**631 Thousand Children**

289 Thousand Household  
Source: Ministry of Family, Labour and Social Services, 27.05.2020

Calculated by taking into account the cash recipient's head of household status in ESSN for May.

**Gender Breakdown**

**50% Girl**  
309.754

**50% Boy**  
313.572

**Application Centres**  
**1.003 Social Assistance and Solidarity Foundation**  
**9 Türk Kızılay Service Centres**

**168 CALL CENTRE**

**Number of Calls Received**  
**158.708**

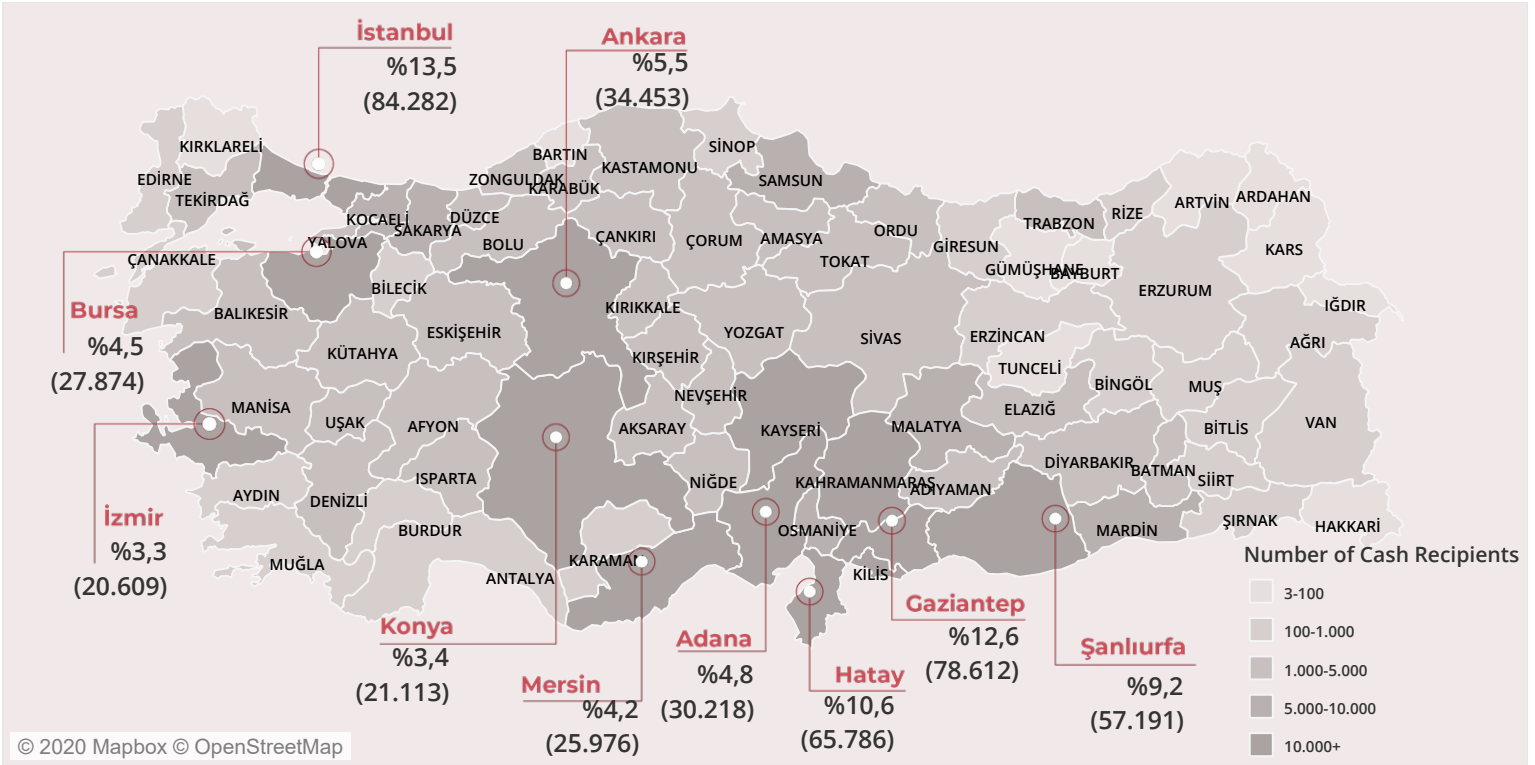
**5 Language**  
Turkish, English, Arabic, Persian, Pashto

\* 168 Call Center has been operated by Turkish Red Crescent (Türk Kızılay) since 2010.

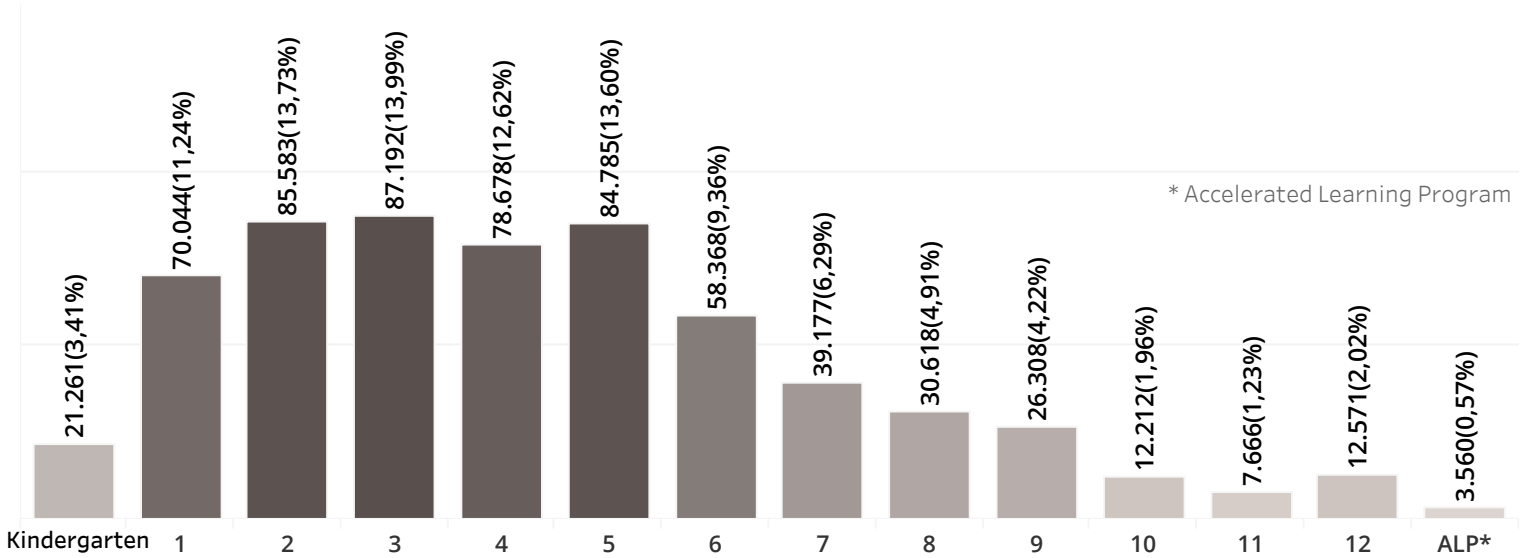




## Top 10 Provinces with Highest Number of People Receiving Regular Assistance



## Grade Breakdown



## Nationality Breakdown (Top 4 Nationalities)

SYRIA	%84,9	529.446
IRAQ	%8,7	54.157
AFGHANISTAN	%4,7	29.483
IRAN	%0,6	3.928

## School Level Breakdown

Kindergarten	%3,4	21.261
Primary School	%52,0	321.511
Middle School	%34,5	212.948
High School	%9,5	58.762
ALP	%0,6	3.560



## ContactUs

This document is produced by Kızılaykart Cash Based Assistance Programmes Coordinatorship.

[www.twitter.com/KIZILAYKART](https://www.twitter.com/KIZILAYKART)

[www.facebook.com/Kizilaykart.SUY](https://www.facebook.com/Kizilaykart.SUY)

[Youtube Channel: KIZILAYKART](https://www.youtube.com/channel/KIZILAYKART)

#CardLoadedwithGoodness