

How often will I receive payment within the scope of the CCTE Project?

- 1) Cash payments are calculated every month and uploaded to your KIZILAYKART assigned you in two-month periods, provided that your child attends school regularly during the periods when schools are open.
- 2) As long as you continue to meet the conditions of the project, the assistance amount will be regularly uploaded to your KIZILAYKART every two months. Payments are made in January, March, May, July, September and November.
- 3) The amount of assistance an eligible family can receive varies according to the gender of the children attending school and the grade they are enrolled in, depending on the payment periods.

The payments made within the scope of the project vary depending on the age and gender of the children. You can access the details about the amount of assistance through the link that appears on your screen by pointing your phone's camera at the QR code on the right.



The assistance amount may vary for kindergarten, primary, secondary and high school students.

Households benefiting from the ESSN and C-ESSN projects and having child/children attending school can also apply for the CCTE Project.

The assistance will be uploaded to your KIZILAYKART on the condition that your children attend school regularly.

You can access up-to-date information about the assistance amounts through the official communication channels of the KIZILAYKART Programmes listed in this brochure.

What is the condition of continuity?

The requirement of continuity entails that your child should not have more than 4 unexcused absences (except for the cases supported by official documentation) from school in a month.

How can I utilize the assistance provided within the scope of CCTE Project?

For each child attending school regularly in the household, the CCTE transfer amounts, uploaded to your account every two months, can be withdrawn for free from Halkbank, Ziraat Bankası, and VakıfBank ATMs, or used through POS devices in Türkiye. Amounts of TRY 10 or more can be withdrawn from ATMs, while amounts below TRY 10 can only be used in purchases.

Remember: If you do not collect your KIZILAYKART from the relevant Halkbank branch for 3 months and/or if you do not use the amount uploaded to your KIZILAYKART for 6 months, your balance will be withdrawn by the system and will not be refunded to your card.

By which institution is the CCTE Project financed?

The CCTE Project is financed by the European Union and implemented in cooperation with the Ministry of Family and Social Services and Türk Kızılay (Turkish Red Crescent).



Monday - Friday
08:00 - 18:00



Saturday
09:00 - 13:00

Turkish · Arabic · Farsi · English · Pashto

Contact Us



www.facebook.com/Kizilaykart.Programlari |

www.kizilaykart.org | Youtube: **KIZILAYKART**

You can call toll-free 168 Kızılay Call Centre to request information, submit a complaint and share your feedback.



This project is funded by the European Union.
Bu proje Avrupa Birliği tarafından finanse edilmektedir.
هذا المشروع يتم تمويله من قبل الاتحاد الأوروبي.



THE CONDITIONAL CASH TRANSFER FOR EDUCATION (CCTE) FOR FOREIGNERS

PROJECT



KIZILAYKART
Cash Based Assistance
Programmes

What is the CCTE Project?

The Conditional Cash Transfer for Education for Foreigners (CCTE) Project is a conditional cash assistance project that provides cash assistance for the vulnerable households to regularly send their school-age children to school.

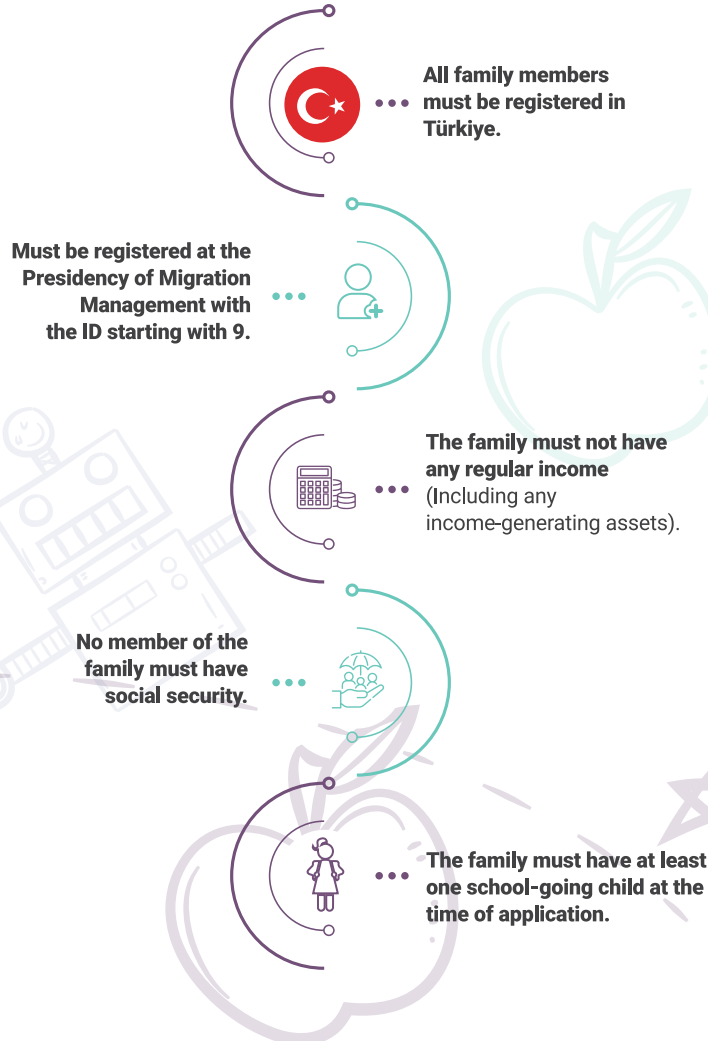
As of 2017, the CCTE is available to all children enrolled in formal education and having an ID number starting with 9.

Cash transfer within the scope of the Project are provided every two months for every child in kindergarten up to 12th grade on the condition that they attend school regularly (the child should not miss more than 4 days of school in a month).

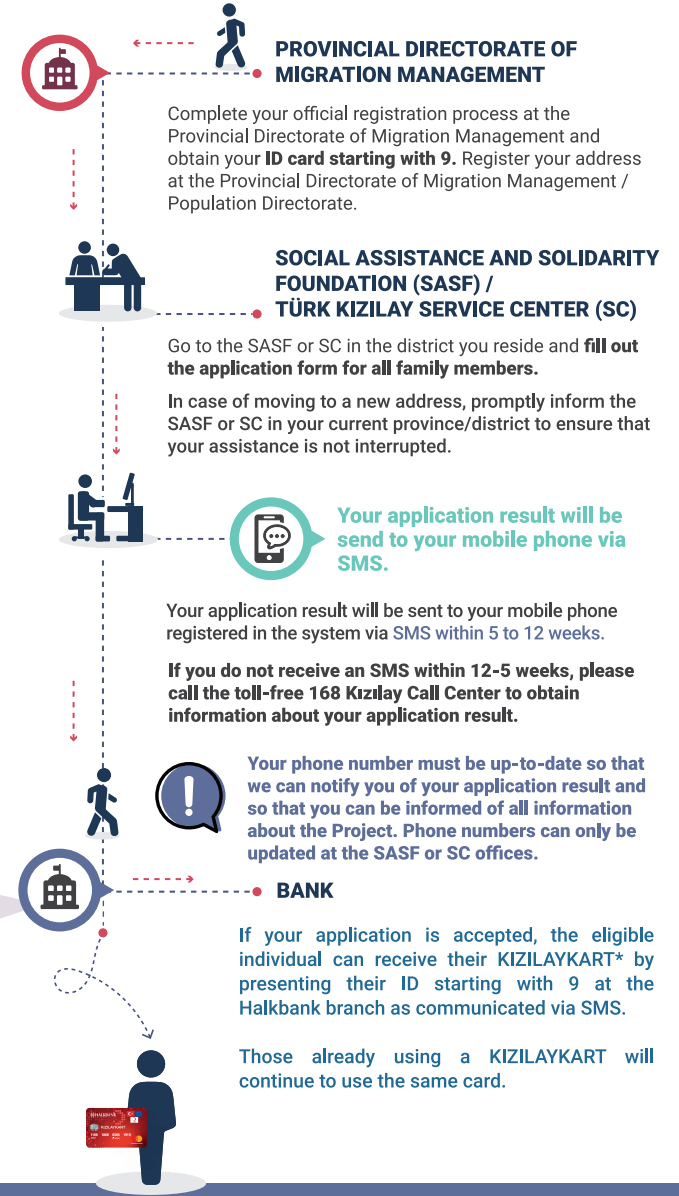
Who can apply for the CCTE Project?

All households with school-age children in Türkiye, who have completed their MERNIS registration and have an ID number starting with 9 can apply for the CCTE Project. Eligibility is assessed based on the same criteria for each applicant.

WHAT ARE THE APPLICATION CRITERIA FOR THE CCTE PROJECT?



How can I apply for the CCTE Project?



For detailed information, please visit our official Facebook page and website.

www.kizilaykart.org • www.facebook.com/Kizilaykart.Programlari

This printed material has been prepared with the financial support of the European Union. The content of this publication is the sole responsibility of the Directorate General of Social Assistance FRIT Coordination and the Türk Kızılay (Turkish Red Crescent). It does not necessarily reflect the views of the European Union.

*The right to own a Project card is generally granted to the mother. However, a common cardholder will be determined for those benefiting from or applying for the CCTE Project in conjunction with the Emergency Social Safety Net (ESSN) or Complementary Emergency Social Safety Net (C-ESSN) Projects. The joint cardholder to be determined can be the mother, father, or any other adult member of the household.